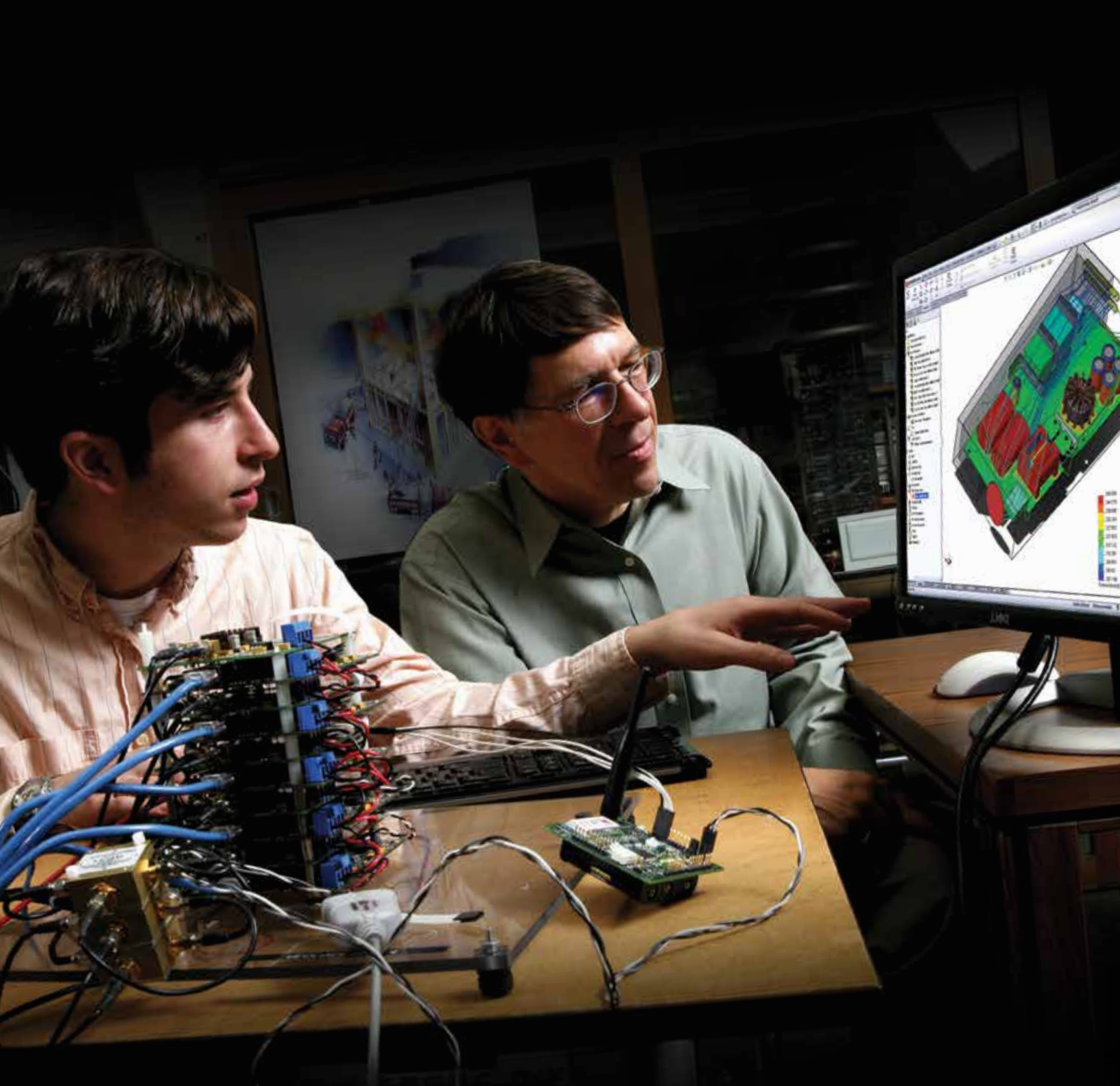


## SOLIDWORKS EDUCATION PROGRAM



*"We choose SolidWorks because it is  
intuitive and easy to use,  
and the built-in Simulation package makes  
it extremely easy to analyze our designs."*



*"We needed modeling software that would be easy to use for students without any previous CAD experience."*

- Valery O. Routkovskii, Department Head CAE  
Siberian Aerospace Academy, Russia



# GIVE YOUR STUDENTS AN ADVANTAGE WITH POWERFUL, EASY-TO-USE 3D CAD

The SolidWorks® Education Program offers you a complete suite of 3D design tools used by millions of design professionals across a broad range of industries. With the intuitive SolidWorks user interface and design capabilities, your students will quickly be able to:

- Conceptualize and visualize detailed designs
- Precisely document designs and parts lists
- Run complete design analysis and verification
- Create dynamic technical illustrations for project presentations
- Use product data management to track student project files

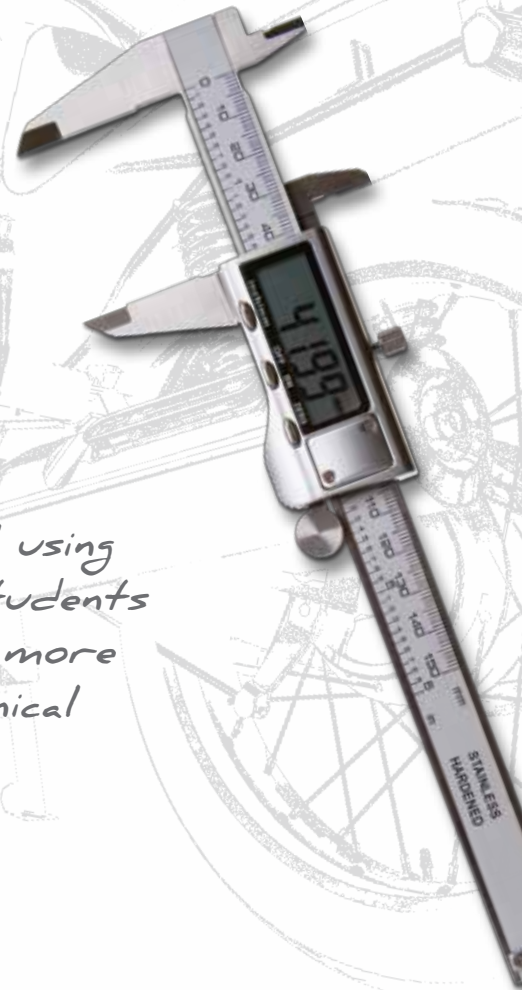
With the SolidWorks Education Program, your students can focus on ideas, problem solving, and innovation—instead of having to memorize complex commands.

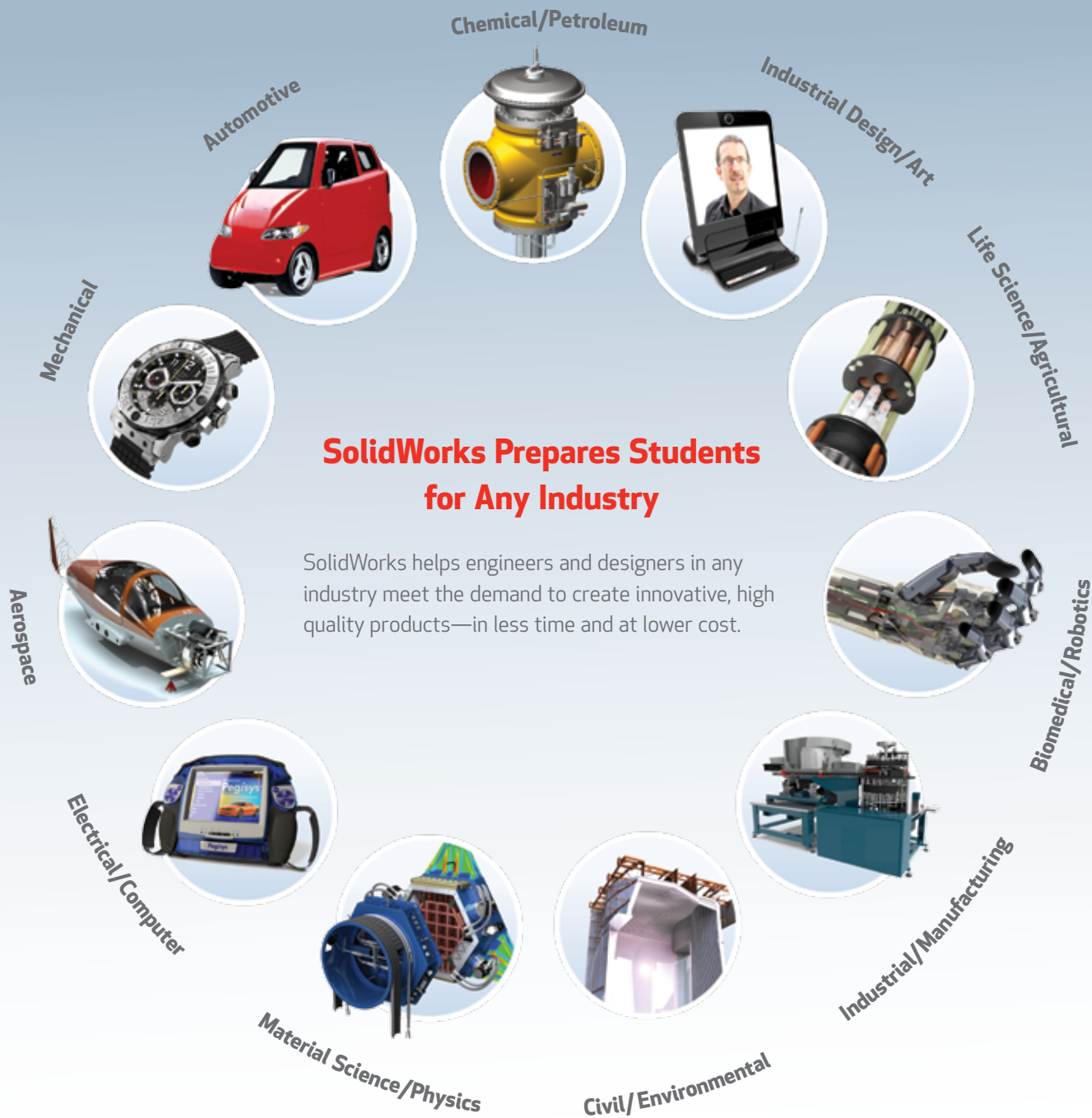
*"We have been extremely successful using SolidWorks in the class, and our students benefit from an experience that is more representative of authentic mechanical engineering."*

- Daniel Frey, Professor of Mechanical Engineering and Engineering Systems  
Massachusetts Institute of Technology (MIT), USA



.....  
CBZ Hero Honda Motorcycle Student Design Project  
Indian Institute of Technology, India  
.....





Worcester Polytechnic Institute, USA

**In addition to our Education License, SolidWorks also offers University Research Licensing (URL) for your individual research projects and publications.**

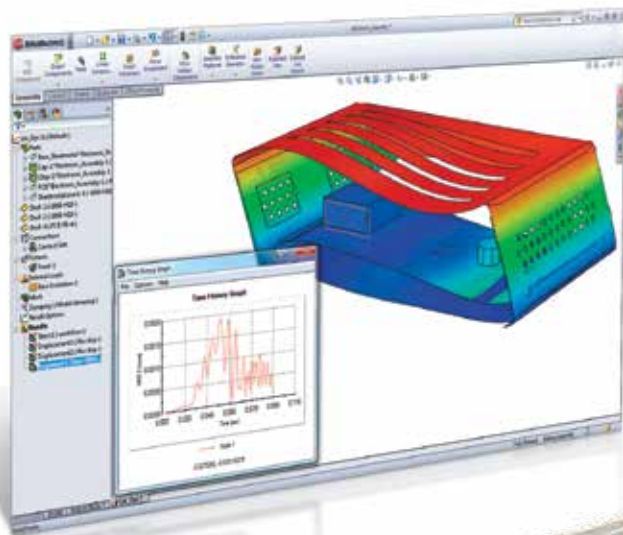
University researchers can access the latest in engineering technology, while communicating with other researchers and industrial users around the world. URL has no restrictions for use in publications, industry-funded projects, and patent applications. It does not contain the educational watermark and follows the same release schedule as the SolidWorks commercial license.

# SOLIDWORKS PREPARES YOUR STUDENTS FOR SUCCESS

SolidWorks teaches the design and engineering skills needed to build a successful career. In addition, by offering the SolidWorks Certification Program—a set of industry-standard engineering design competency exams—you can help your students demonstrate CAD proficiency and expertise while showing potential employers their commitment to professional development. This can lead to higher pay and, ultimately, greater job satisfaction.

*"We hope to encourage students to become Certified SolidWorks Associates or Professionals. It's a great opportunity for students to gain recognition and obtain better job opportunities in today's competitive world."*

Sajid Abdullah, Digital Engineering Consultant, Sunderland University, England



## **SolidWorks offers you and your students every advantage:**

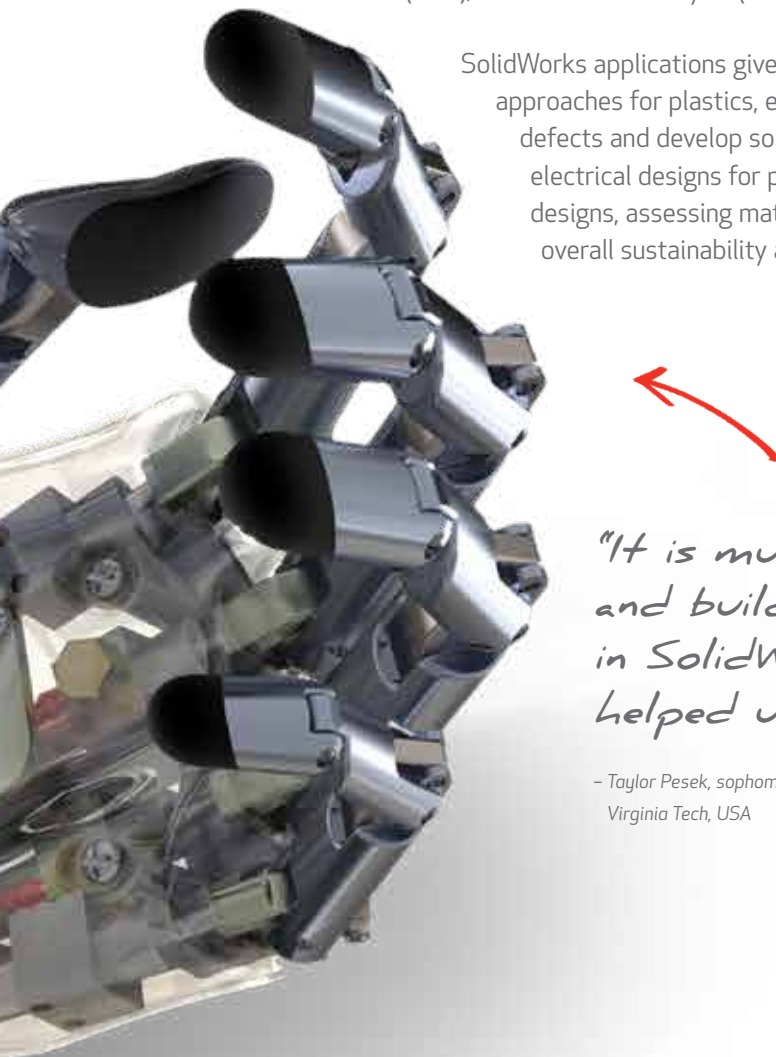
- A complete suite of tools for every step of the design process
- Easy-to-use tutorials and custom curriculum guides
- Project-based activities for design, modeling, and visualization
- Curriculum created by educators and industry professionals
- Access outside the classroom
- A competitive advantage in the job market with the SolidWorks Certification Program
- Networking with an active worldwide community of more than 25,000 educational institutions, covering 87 percent of the top technical institutions, and extending to more than 1.9 million CAD professionals



# 3D DESIGN AND MORE—A COMPLETE PRODUCT DEVELOPMENT SOLUTION

SolidWorks software goes beyond drawings and models. With built-in simulation tools, your students can test their designs throughout the development process to verify operation and optimize performance without physical prototypes. Every SolidWorks Education Edition license comes with tools for Finite Element Analysis (FEA), Computational Fluid Dynamics (CFD), and Kinematic Analysis (motion analysis).

SolidWorks applications give students the tools they need to study and optimize design approaches for plastics, electrical routing, and sustainable design. They can identify potential defects and develop solutions in mold design, plastics materials, and processing; create electrical designs for products and systems; and analyze the environmental impacts of their designs, assessing materials, manufacturing, and transportation to optimize a product's overall sustainability and "carbon footprint."



*"It is much faster and easier to design and build individual parts and assemblies in SolidWorks. And the motion simulation helped us reduce mistakes."*

— Taylor Pesek, sophomore, mechanical and electrical engineering major  
Virginia Tech, USA



## Access a broad curriculum to reinforce creativity and innovation:

- CAD Instructor Guide with lesson plans
- Technical Tutorials
- Design Projects
- Engineering Drawing for Visualization
- Assessments
- Educator Blog, Online Community, Newsletter

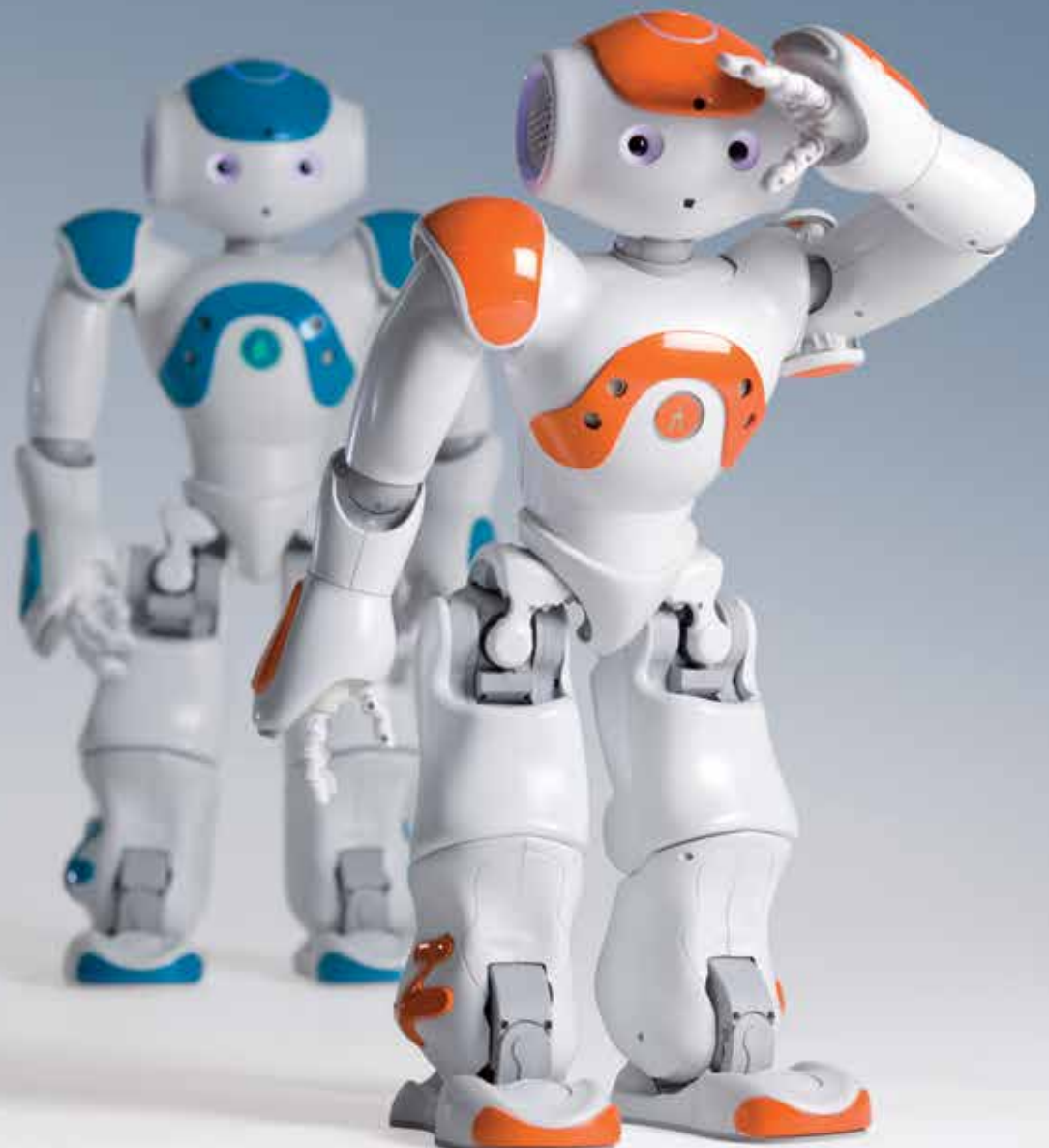
University of Michigan Solar Car Team  
North American Solar Challenge Champions, USA

# SOLIDWORKS MAKES MANAGING SOFTWARE LICENSING EASY

With students working remotely and in multiple school locations, CAD software licensing can often be challenging. The SolidWorks Education Program eliminates those frustrations by offering flexible licensing solutions that are easy to implement and simple to manage with approaches that include:

- Classroom access packages for up to 500 users, curriculum lessons, and faculty technical support
- Certification exams and student design kits
- Remote access so students can work anytime from anywhere
- Local support always available from SolidWorks Value-Added Resellers
- Networking through online blogs, forums, and more than 200 local SolidWorks User Groups

The SolidWorks Education Program provides the 3D design tools, curriculum, and community support your students need to propel their success. To learn more about the SolidWorks Education Program, call a SolidWorks Value-Added Reseller or visit [www.solidworks.com/education](http://www.solidworks.com/education).



*Humanoid robots designed by  
Aldebaran Robotics, France*

#### Corporate Headquarters

Dassault Systèmes SolidWorks Corp.  
175 Wyman Street  
Waltham, MA 02451 USA  
Phone: 1 800 693 9000  
Outside the US: +1 781 810 5011  
Email: [generalinfo@solidworks.com](mailto:generalinfo@solidworks.com)

#### Europe Headquarters

SolidWorks Europe SARL  
53 Avenue de l'Europe  
13090 Aix-en-Provence  
France  
Phone: +33 (0)4 13 10 80 20  
Email: [infoeurope@solidworks.com](mailto:infoeurope@solidworks.com)

#### Japan Headquarters

SolidWorks Japan K.K.  
Pier City Shibaura Bldg  
3-18-1 Kaigan Minato-ku  
Tokyo 108-0022 Japan  
Phone: +81 3 5442 4001  
Email: [info@solidworks.co.jp](mailto:info@solidworks.co.jp)

#### Asia/Pacific Headquarters

Dassault Systèmes Singapore Pte. Ltd.  
9 Tampines Grande, #06-13  
Singapore 528735  
Phone: +65 6511 7988  
Email: [infoap@solidworks.com](mailto:infoap@solidworks.com)

#### Latin America Headquarters

Dassault Systèmes do Brasil Ltda.  
Rua Quintana, 887 - 5º. and - conj. 52  
São Paulo, SP  
Brasil 04569-011  
Phone: +55 11 3186 4150  
Email: [info@solidworks.com](mailto:info@solidworks.com)

*Formula Hybrid Contest  
First Place Winner designed by  
Texas A&M University Racing Team, USA*

